



Celeste⁺

CX1 & CX1e

You Are the Creator

Contents

Celeste Overview	4
Artspira Connectivity	6



Celeste CX1 Sewing	8
Celeste Features	10
Celeste Overview	14

Celeste CX1e Embroidery	16
Celeste CX1e Features	18
Celeste CX1e Overview	22



From Aspiration to Realization

Celeste CX1 & CX1e

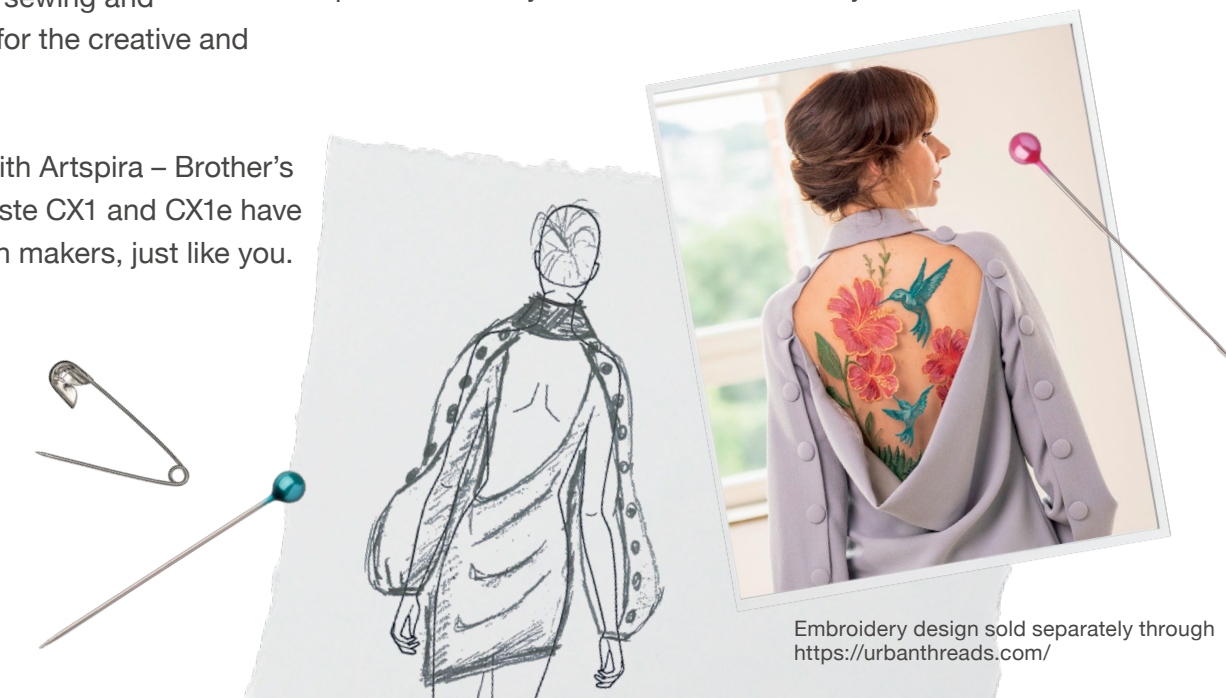
There's never been a better moment or more affordable way to take your sewing and embroidery skills to next level status. The time is now to pursue your artistic endeavors and experience the Brother difference.

Introducing Celeste CX1 and CX1e. Combining exceptional quality with advanced features typically reserved for our luxury models, Brother's newest sewing and embroidery machines are designed for the creative and budgetary needs of every maker.

Wireless enabled¹ and compatible with Artspira – Brother's all-in-one mobile design app² – Celeste CX1 and CX1e have been expertly engineered for modern makers, just like you.

Whether you're a burgeoning hobbyist or have your sights set on going pro, you'll realize a brand new world of creative possibilities.

Putting unprecedented value within reach, Celeste CX1 and CX1e make it easier than ever to transform your ideas, your passions, and your ambitions into reality.



Embroidery design sold separately through <https://urbanthreads.com/>

Creatively Connected

Artspira

Celeste CX1 and CX1e are designed to perform, impress, and inspire. Equipped with wireless capabilities¹, both machines are compatible with Artspira – your colorful creative companion.



App-Solutely Amazing

A free one-of-a-kind mobile design app exclusively from Brother, Artspira is a virtual platform for creativity, inspiration, and ideas. With thoughtfully curated and regularly updated content, including helpful tutorials and trendsetting new ideas, Artspira is an innovative way to send your sewing and embroidery skills sky-high.

Plus!

Artspira connects to any Brother wireless-enabled embroidery machine and ScanNCut DX, as well as PrintModa and Sublimation creative printers. With an entire network of sewing, embroidery, and crafting machines within reach, you'll have the versatility to create so many more types of projects than you ever have before.

Offering a subscription option for makers of all skill levels, Artspira is an app with something for everyone. And, it's ready to ignite your imagination now!



Celeste⁺

Let Your Sewing Skills Soar with Celeste CX1

Celeste CX1: Computerized Sewing & Quilting Machine

- ✓ Brother's proprietary Intelligent Stitch Regulator
- ✓ Wireless enabled¹ + compatibility with Artspira²
- ✓ LED-illuminated workspace measuring ~400 square inches with included wide table
- ✓ A category-leading number of 760 built-in sewing stitches
- ✓ Luxury-grade accessories typically offered exclusively on Brother's higher-tier machines
- ✓ With 20+ sewing feet (including the Compact Dual Feed Foot that's ideal for quilting)
- ✓ Unrivalled performance in sound, seam tightness & sewing quality



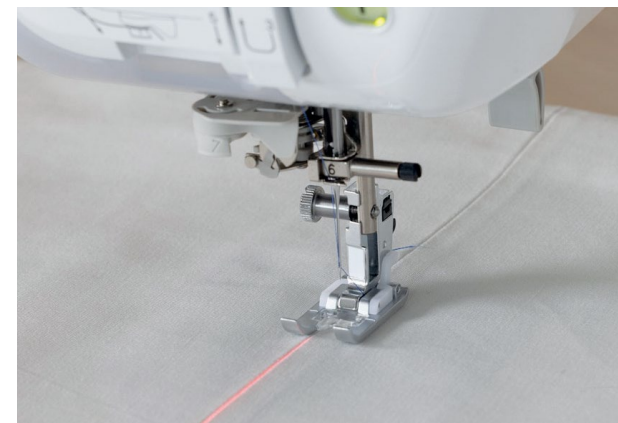
Innovative. Impressive. Progressive.

A thoroughly modern machine equipped with today's leading-edge features, the CX1 is the next stop on your way to success.



Intelligent Stitch Regulator

Brother's Intelligent Stitch Regulator is a remarkable feature, that until now has only been available on Brother's flagship model. Using infrared sensor technology, it automatically adjusts needle timing to match the speed of fabric being fed through the machine, and operates in Continuous, Intermittent, and Basting modes. Its height can be adjusted easily in the settings, while the curved design of the foot (Regular, Echo, and Open-Toe) keeps the fabric flowing effortlessly and ensures the assigned stitch lengths are equal, regardless of the speed of the material.



Sew Straight Laser Guide

The Sew Straight Laser Guide is all about precision, helping to align rows of decorative stitches in smooth, straight lines on fabric of any color.



Stitch Tapering

Taper like an ace with the effective Stitch Tapering feature. Add impeccable, professional-looking tapered stitches to home décor projects, and to various garments including jeans, blouses, and dress shirts.



Workspace & Wide Table

With the included wide table, the CX1 offers a ~400 square inch workspace. Roomy and accommodating, it's the comfortable way to complete large sewing and quilting projects.



Easy Needle Plate Removal

Featuring quick and easy needle plate access, allowing for easy removal and hassle-free cleaning to keep your machine running smoothly.

Part sewing machine. Part quilting machine. All dream machine.

Set your sights on the **10.1" built-in, high-definition LCD touchscreen**. This crystal clear display works like a dream by putting responsive use and convenience at your fingertips.

- Quickly scroll through menus
- Select from intuitive icons
- See designs in preview mode
- Enjoy the ease of on-screen editing

Plus, you'll love browsing the library of built-in sewing stitches, which includes:

- 20 tapering stitches
- 3 Sashiko stitches
- 130 stitches compatible with the included Dual Feed Foot

Once you've made your choices, you'll appreciate how easy it is to switch between them using the on-screen **Stitch Selector**.



Celeste CX1 Features

11" x 25" Workspace

With the included wide table, the workspace measures ~400 square inches, with an ample 11.25" from needle to arm.

Intelligent Stitch Regulator

Automatically adjusts needle timing to align with the speed of the fabric being fed through the machine.

Automated Sewing Functions

Automatic Thread Tension, Automatic Needle Threading System, and Easy Bobbin Winding with Adjustable Bobbin Winding Speed for maximum productivity and efficiency.



Easy Needle Plate Removal

Featuring quick and easy needle plate access- allowing for easy removal and hassle-free cleaning to keep your machine running smoothly.

My Custom Stitch

Create a unique stitch or pattern, save it, then easily use it to create original projects with a personal flair.

Illuminated Workspace

Experience improved accuracy and reduced eyestrain with advanced 10" LED lighting.

10.1" Touchscreen

Integrated, high-definition LCD for effortless scrolling, navigation, and on-screen editing and customization.

Sew Straight Laser Guide

Laser guidance on fabrics of all colors for quilting, piecing, sewing, or aligning rows of decorative stitches in straight, smooth lines.

Celeste⁺

Amplify Your Embroidery Abilities

with Celeste CX1e

Celeste CX1e: Computerized Embroidery-Only Machine

- ✓ Wireless enabled¹ + compatibility with Artspira²
- ✓ Category-leading embroidery area measures 9.5"x14"
- ✓ Library of built-in sewing stitches, 523 embroidery designs, 26 embroidery fonts, and 24 craft patterns
- ✓ Signature features include Automatic Color Sorting, Color Shuffling, and Matrix Copy



Exceptional Engineering. Extraordinary Embroidery.

Get ready to elevate your embroidery expertise. Offering a powerful combination of intelligent features, efficient performance, and Brother's advanced engineering, Celeste CX1e is in a class all its own.



Spacious Embroidery Area with LED Lighting

Enhanced by built-in LED lighting, the spacious embroidery area measures 9.5" x 14" and provides plenty of room to comfortably create large projects. Paired with two included embroidery frames (5"x7", 9.5" x 14"), the CX1e is ready for use right out of the box.



2-Point Embroidery Positioning

The 2-Point Embroidery Positioning function is automated, accurate, and awesome. It includes a precise LED pointer to indicate exact needle drop location, plus it automatically sets designs into perfect position, and even corrects crooked hoops.



Matrix Copy

Automatically arranges repeat designs, saving fabric and time. Create multiple designs in a single hooping for greater efficiency.



Big Ambitions. Big Screen. Big Possibilities.

Take a look at the built-in 10.1" high-definition LCD screen. User-friendly and crystal clear, it makes navigating the CX1e a snap.

Simply scroll, tap, and swipe your way through menus and intuitive icons. You can even preview and edit designs directly on-screen.



**You'll love browsing
the library of built-in designs
and frames, which includes:**

- 523 embroidery designs, with 17 available in various sizes (L/M/S/SS/XS)
- 26 embroidery fonts
- 24 craft patterns
- 140 decorative frames
- 270 buttonhole designs

With so many choices, it's clear to see that nothing but endless creativity awaits you!



Celeste CX1e Features

Matrix Copy

Automatically arranges repeat designs, saving fabric and time. Create multiple designs in a single hooping for greater efficiency.

No Sew Sewing

Simply remove details from selected designs to ensure they are excluded from finished projects.

Easy Echo & Deco Fill

Easily add decorative textures to virtually any project.



Max Embroidery Area: 9.5" x 14"

Illuminated Workspace

Experience improved accuracy and reduced eyestrain with 5" LED lighting

10.1" Touchscreen

Integrated, high-definition LCD for effortless scrolling, navigation, on-screen previewing and editing.

My Stitch Monitor App²

Receive alerts to your phone or tablet when thread needs to be changed, or once projects are complete.

2-Point Embroidery Positioning

Select alignment points that set a specific needle drop location to ensure precise placement of designs.

Celeste⁺

You Are The Creator

<https://www.brother-usa.com/products/CX1>
<https://www.brother-usa.com/products/CX1e>

¹Wireless internet connection required.

²Free app download and wireless connection required. Compatibility may vary by device, operating system and country.

All images for illustrative purposes only. ©2025 Brother International Corporation.

brother
at your side